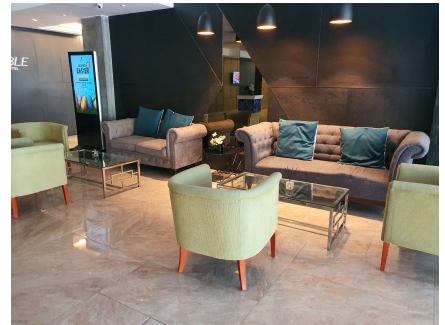


# HANA ACADEMY EXTERNAL ACCOMMODATION HEVEA 4-STAR HOTEL (INCLUDING COMMUTING AND MEAL SERVICES)



# Inclusions and prices

## ● hotel package price (Low season 2/28~6/22, 9/1~11/30)

Room type	Price / 1person, 4weeks (including meals and shuttle service)		Price / 1person, 4weeks (excluding meal service)	
	Peak season	Low season	Peak season	Low season
Room for 1	\$2,100	\$1,800	\$1,950	\$1,650
Room for 2	\$1,250	\$1,060	\$1,100	\$935
Room for 3	\$950	\$800	\$800	\$680
Room for 4	\$750	\$630	\$600	\$510

- Room for 1 : Deluxe single (1 double size bed ), Room for 2~4 : Deluxe twin (2 double size bed)
- Room cleaning : 3times a week
- Hotel provides towels during room cleaning
- Laundry services is available upon individual request at the hotel reception (paid service)
- 3meals are provided on weekdays at HANA cafeteria (no meals on Weekends, Holidays)
- Shuttle service (HANA to HEVEA hotel on weekdays) 6 times/day, at 8AM,12PM noon and 6PM
- Shuttle service (HEVEA hotel to Korean town):shuttle service operates between 12PM to 10PM



# Other available facilities

- Hotel swimming pool (until 10PM)
- Hana academy pool
- Hotel cafeteria (Additional charge)
- Café across the street from the hotel (Cioccolo Café)



# Refund policy

- The hotel package requires full payment upon registration for hotel reservation.  
(Tuition fees are subject to the tuition refund policy)
- Registration date to 30 days prior to check-in date : 50% refund
- 29~15days prior : 30% refund
- 14~7days prior : 15% refund
- 6~1days prior : no refund

